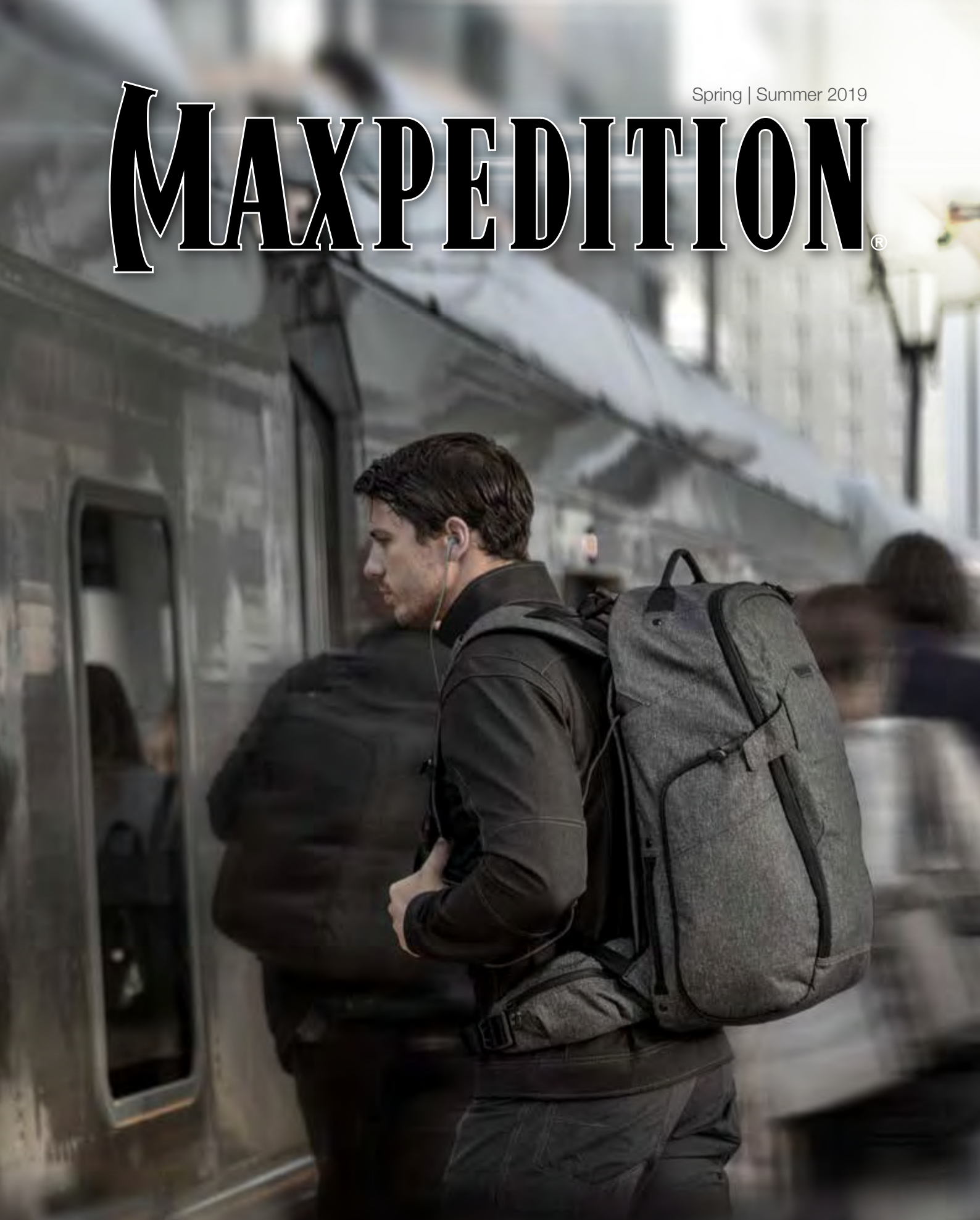


Spring | Summer 2019

MAXPEDITION®



▼ **ENTITY**

▼ **LEGACY**

▼ **AGR** *ADVANCED
GEAR RESEARCH*

MAXPEDITION®

P. 06
ENTITY
COVERT

ENTITY

CORE FEATURES:

INTELLIGENT DESIGN
HIGH QUALITY MATERIALS
METICULOUS WORKMANSHIP
REINFORCED CONSTRUCTION
LAB & FIELD TESTED

LEGACY

AGR

Founded in 2003, Maxpedition successfully optimized the design ethos of American military-grade MOLLE gear to suit the needs of everyday life and popularized its functionality to a global audience. Often imitated but never equaled, genuine Maxpedition gear is the benchmark against which others are compared, and it is trusted by special forces operators, law enforcement officers, adventure traconcealed carry products, further strengthening the Maxpedition brand umbrella of tactical carry solutions.

P. 22
AGR
MODERN

P. 40
LEGACY
TRADITIONAL

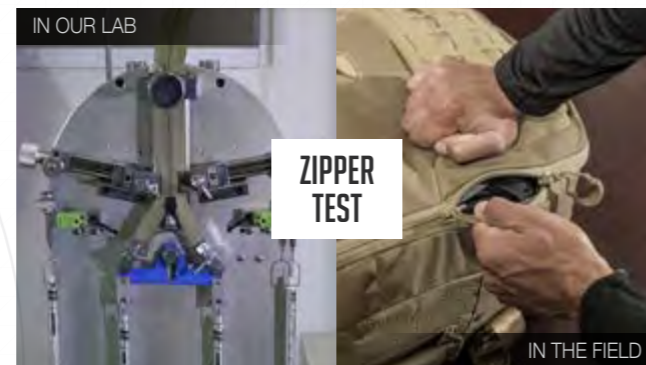
RESEARCH & DEVELOPMENT

From creative vision to tangible reality, the development cycle of a Maxpedition product begins with numerous design sketches that explore functional and aesthetic possibilities. After a concept has been selected, the design team drafts a technical package containing working drawings, specifications, construction details and material call-outs. Based on this tech pack, our sample making team constructs the first prototype, which is scrutinized and subjected to lab and field testing. Through numerous rounds of revisions over a period of months, the final product takes shape.



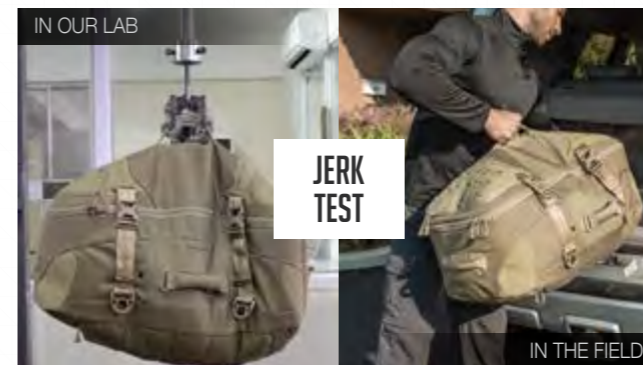
LAB & FIELD TESTING

Durable and built to last, Maxpedition products must pass comprehensive testing during the development phase and prior to introduction. Lab testing on state-of-the-art equipment yields the data needed for scientific analysis. While components, materials and construction methods may perform well in a laboratory setting where conditions are controlled, they must also be proven in the real world where just about anything can happen. For this reason, we also conduct all-weather field testing to ensure our gear stands up to the challenges of daily hard-use.



ZIPPER
TEST

IN THE FIELD



JERK
TEST

IN THE FIELD



TUMBLE
TEST

IN THE FIELD



DRIP
TEST

IN THE FIELD



PULL
TEST

IN THE FIELD



ABRASION
TEST

IN THE FIELD



ENTITY™

TACTICAL FROM WITHIN

Designed around our Non-Tactical / Tactical (NTT) concept, the new Entity™ line focuses on discreet concealed carry for covert operators and prepared citizens who choose to be unnoticed. A sleek, modern exterior devoid of characteristics typically associated with the “tactical look” masks an interior optimized for organization and situational readiness.



ENTITY 35 CCW-ENABLED
INTERNAL FRAME BACKPACK 35L



ENTITY 27 CCW-ENABLED
LAPTOP BACKPACK 27L



ENTITY 23 CCW-ENABLED
LAPTOP BACKPACK 23L



ENTITY 21 CCW-ENABLED
EDC BACKPACK 21L



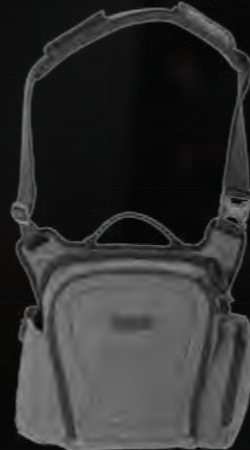
ENTITY 19 CCW-ENABLED
BACKPACK 19L



ENTITY 16 CCW-ENABLED
EDC SLING PACK 16L



ENTITY CROSSBODY BAG
LARGE 14L



ENTITY CROSSBODY BAG
SMALL 9L



ENTITY TECH SLING BAG
LARGE 10L



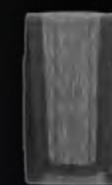
ENTITY TECH SLING BAG
SMALL 7L



ENTITY UTILITY
POUCH LARGE



ENTITY UTILITY
POUCH MEDIUM



ENTITY UTILITY
POUCH SMALL



ENTITY UTILITY
POUCH TALL



ENTITY
MODULAR POCKET



ENTITY™ HOOK &
LOOP ADMIN PANEL



ENTITY HOOK & LOOP
MESH STORAGE PANEL



ENTITY HOOK & LOOP
LOW PROFILE PANEL



ENTITY HOOK &
LOOP UTILITY PANEL

KEY FEATURES



ASH

CHARCOAL

1 TUCKABLE MAGNETIC WINGS FOR QUICK CLOSURE

2 EARPHONE/POWER BANK CABLE PORTS E23, E27, E35 ONLY

3 EASY ACCESS SIDE POCKETS

4 CCW COMPARTMENT WITH SECURITY LOCKOUT STRIP

5 TROLLEY HANDLE PASS-THROUGH ON 23L, 27L AND 35L ONLY

6 REINFORCED MOLLE/PALS ATTACHMENT POINTS

7 CUSTOM FABRICATED SHAPE-SHIFT™ WEBBING HANDLES

8 420D NYLON LINER EMBOSSED WITH ANTI-COUNTERFEIT LOGOS

9 FRAY-RESISTANT GOSSAMER™ MESH

10 LOOP-LINED INTERIOR WALL FOR ATTACHING HOOK-BACKED ACCESSORIES

11 EXPANDABLE BOTTLE HOLDERS E19 & CROSSBODY ONLY

12 DETACHABLE AND CONCEAL-ABLE DRAWBRIDGE STRAPS

ASH

CHARCOAL

ENTITY 35™

CCW-ENABLED INTERNAL FRAME BACKPACK 35L

STYLE: NTPK35 / VOLUME: 2136 CU IN | 35 L
OVERALL: 12.5 x 10.5 x 22 IN | 31.8 x 26.7 x 55.9 CM

- Low profile subdued exterior
- Ergonomic padded shoulder straps with quick release buckles
- Lifter straps for adjusting shoulder strap ergonomics & fit
- Adjustable sternum strap
- Semi-rigid flexible internal frame system with aluminum stay
- Removable waist belt with two gusset zippered pockets
- Lockable main compartment with padded sleeve for 15" or 17" laptop
- Tuckable exterior magnetic wings for quick temporary closure of main compartment
- Main compartment drawbridge straps for additional security
- Spacious interior with many compartments for organization
- Loop-lined interior wall for attaching hook-backed accessories
- Two-way access to fully loop-lined rear CCW compartment
- Double-sided Security Lockout Strip included
- Trolley handle pass-through
- Easy access side pocket (fits M4/AR15 30 round magazine)
- Dual side ports for headphones, charger cables, etc.
- Shapeshift™ webbing top carry handle and dual side grab handles





ENTITY 27™

CCW-ENABLED LAPTOP BACKPACK 27L



ASH

CHARCOAL



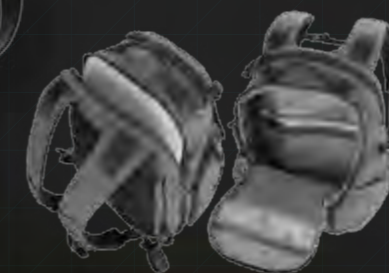
STYLE: NTPK27 / VOLUME: 1648 CU IN | 27 L
OVERALL: 12 x 9 x 20 IN | 30.5 x 22.9 x 50.8 CM

- Low profile subdued exterior
- Ergonomic padded shoulder straps with quick release buckles
- Adjustable sternum strap
- Removable waist belt with quick release buckles
- Lockable padded compartment for 15" or 17" laptop
- Tuckable exterior magnetic wings for quick temporary closing of main compartment
- Lockable main compartment with assorted pockets
- Main compartment drawbridge straps for additional security
- Spacious interior with many compartments for organization
- Loop-lined interior wall for attaching hook-backed accessories
- Two-way access to fully loop-lined rear CCW compartment
- Double-sided Security Lockout Strip included
- Trolley handle pass-through
- Easy access side pocket (fits M4/AR15 30 round magazine)
- Dual side ports for headphones, charger cables, etc.
- Shapeshift™ webbing top carry handle and dual side grab handles



ENTITY 23™

CCW-ENABLED LAPTOP BACKPACK 23L



ASH

CHARCOAL



STYLE: NTPK23 / VOLUME: 1404 CU IN | 23 L
OVERALL: 12 x 9 x 18 IN | 30.5 x 22.9 x 45.7 CM

- Low profile subdued exterior
- Ergonomic padded shoulder straps with quick release buckles
- Adjustable sternum strap
- Removable waist belt with quick release buckles
- Lockable padded compartment for 15" laptop
- Tuckable exterior magnetic wings for quick temporary closing of main compartment
- Lockable main compartment with assorted pockets
- Main compartment drawbridge straps for additional security
- Spacious interior with many compartments for organization
- Loop-lined interior wall for attaching hook-backed accessories
- Two-way access to fully loop-lined rear CCW compartment
- Double-sided Security Lockout Strip included
- Trolley handle pass-through
- Easy access side pocket (fits M4/AR15 30 round magazine)
- Dual side ports for headphones, charger cables, etc.
- Shapeshift™ webbing top carry handle and dual side grab handles



ENTITY 21™ CCW-ENABLED EDC BACKPACK 21L

ASH

CHARCOAL



STYLE: NTPK21 / VOLUME: 1282 CU IN | 21 L
OVERALL: 11.5 x 9 x 17 IN | 29.2 x 22.9 x 43.2 CM



- Low profile subdued exterior
- Ergonomic padded shoulder straps with quick release buckles
- Adjustable sternum strap
- Tuckable exterior magnetic wings for quick temporary closing of main compartment
- Main compartment drawbridge straps for additional security
- Spacious interior with many compartments for organization
- Loop-lined interior wall for attaching hook-backed accessories
- Two-way access to fully loop-lined rear CCW compartment
- Double-sided Security Lockout Strip included
- Easy access side pocket (fits M4/AR15 30 round magazine)
- Shapeshift™ webbing top carry handle and dual side grab handles



ENTITY 16™ CCW-ENABLED EDC SLING PACK 16L

ASH

CHARCOAL



STYLE: NTTSL16 / VOLUME: 976 CU IN | 16 L
OVERALL: 10 x 8 x 17 IN | 25.4 x 20.3 x 43.2 CM

- Low profile subdued exterior
- Fully ambidextrous sling pack for right or left side carry
- Padded shoulder strap with swiveling stabilizer strap
- Tuckable exterior magnetic wings for quick temporary closing of main compartment
- Main compartment drawbridge straps for additional security
- Spacious interior with many compartments for organization
- Loop-lined interior wall for attaching hook-backed accessories
- Two-way access to fully loop-lined rear CCW compartment
- Double-sided Security Lockout Strip included
- Easy access side pocket (fits M4/AR15 30 round magazine)
- Shapeshift™ webbing top carry handle and dual side grab handles



ENTITY 19™ CCW-ENABLED BACKPACK 19L

ASH

CHARCOAL



STYLE: NTPK19 / VOLUME: 1160 CU IN | 19 L
OVERALL: 11 x 9 x 17 IN | 28 x 22.9 x 43.2 CM

- Low profile subdued exterior
- Ergonomic padded shoulder straps with quick release buckles
- Tuckable exterior magnetic wings for the temporary closing of the compartment
- Main compartment with 13" laptop sleeve
- Main compartment drawbridge straps for additional security
- Spacious interior with many compartments for organization
- Loop-lined interior wall for attaching hook-backed accessories
- Two-way access to fully loop-lined rear CCW compartment
- Double-sided Security Lockout Strip included
- Dual expandable bottle holders with zipper garages
- Shapeshift™ webbing top carry handle



ENTITY™ CROSSBODY BAG LARGE 14L

ASH

CHARCOAL



STYLE: NTTCB1 / VOLUME: 850 CU IN | 14 L
OVERALL: 11.25 x 5.5 x 11.25 IN | 28.6 x 14 x 28.6 CM

- Rear lockable CCW compartment with a 19" zipper opening
- Adjustable reinforced 1.5" seatbelt webbing shoulder strap with quick release
- Expandable bottle pocket with dual zipper garages
- Zippered side pocket for extra storage
- Main compartment with large opening for high visibility
- Dedicated interior pocket sized to fit most tablets
- Stowable adjustable waist belt
- Removable shoulder pad with webbing attachment points
- Comfortable grab handle reinforced with bar-tacks
- Low profile subdued exterior
- Main compartment with assorted pockets
- Main compartment drawbridge straps for additional security
- Loop-lined interior wall for attaching hook-backed accessories



ENTITY™ TECH SLING BAG LARGE 10L

ASH

CHARCOAL



STYLE: NTTSL1 / VOLUME: 610 CU IN | 10 L
OVERALL: 11 x 5.5 x 14.5 IN | 27.9 x 14.0 x 36.8 CM

- Adjustable sling strap for right or left side carry
- Easily changed from a sling bag to a shoulder bag
- Frontal compartment with organizer pockets
- Full clamshell opening
- Padded main compartment with lockable zipper sliders
- Dual access padded 13" laptop/tablet compartment
- Two-way access to fully loop-lined rear CCW compartment
- Double-sided hook Security Lockout Strip included
- Skin-friendly seatbelt webbing strap and carry handles



ENTITY™ CROSSBODY BAG SMALL 9L

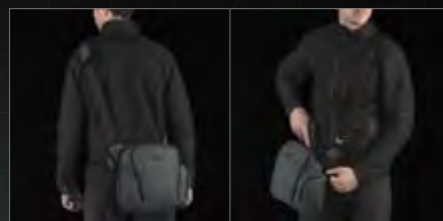
ASH

CHARCOAL



STYLE: NTTCS1 / VOLUME: 550 CU IN | 9 L
OVERALL: 8.5 x 5 x 11 IN | 21.6 x 12.7 x 28 CM

- Rear lockable CCW compartment with a 16.5" zipper opening
- Adjustable reinforced 1.5" seatbelt webbing shoulder strap with quick release
- Expandable bottle pocket with dual zipper garages
- Zippered side pocket for extra storage
- Main compartment with large opening for high visibility
- Dedicated interior pocket sized to fit most tablets
- Stowable adjustable waist belt
- Removable shoulder pad with webbing attachment points
- Comfortable grab handle reinforced with bar-tacks
- Low profile subdued exterior
- Main compartment with assorted pockets
- Main compartment drawbridge straps for additional security
- Loop-lined interior wall for attaching hook-backed accessories



ENTITY™ TECH SLING BAG SMALL 7L

ASH

CHARCOAL



STYLE: NTTSL5 / VOLUME: 430 CU IN | 7 L
OVERALL: 9.5 x 5 x 12.5 IN | 24.1 x 12.7 x 31.8 CM

- Adjustable sling strap for right or left side carry
- Easily changed from a sling bag to a shoulder bag
- Frontal compartment with organizer pockets
- Full clamshell opening
- Padded main compartment with lockable zipper sliders
- Dual access padded 11" laptop/tablet compartment
- Two-way access to fully loop-lined rear CCW compartment
- Double-sided hook Security Lockout Strip included
- Skin-friendly seatbelt webbing strap and carry handles





ENTITY™ MODULAR POCKET

STYLE: NTTZPP
OVERALL: 3.5 x 1 x 7 IN
8.9 x 2.5 x 17.8 CM

- Low profile subdued exterior
- Sized to fit the Apple iPhone 8, 8 Plus, X, XR, XS, XS Max
- Front exterior divided sleeve pocket
- Padded main compartment with two mesh interior sleeves
- 1 secure SlikClip
- Laser cut TPU-840D nylon composite attachment backing
- One (1) TacTie® PJC3™ Polymer Joining Clip included for modular or belt attachment
- United States Utility Patent: 10,130,162 Design Patent: D796,846

ASH CHARCOAL



ENTITY™ HOOK & LOOP ADMIN PANEL

STYLE: NTTPNAGRY
OVERALL: 5 x 7 IN
12.7 x 17.8 CM

- Flat hook & loop organizer panel
- Elastic webbing with divisions of various sizes
- Gusseted pouch with lid
- Hook backing for secure attachment to any loop surface
- Lightweight and low profile

GRAY



ENTITY™ HOOK & LOOP MESH STORAGE PANEL

STYLE: NTTPNMGY
OVERALL: 5 x 2 x 7 IN
12.7 x 5.1 x 17.8 CM

- Lightweight mesh pouch
- Gusseted Gossamer™ mesh pouch with full-length zip opening
- YKK zipper and metal pull
- Hook backing for secure attachment to a loop surface
- Mount vertically or horizontally

GRAY

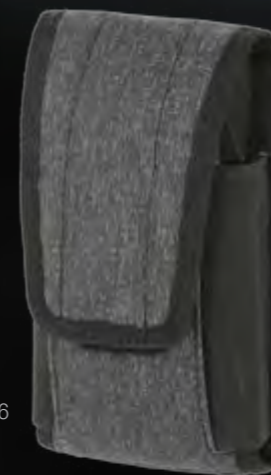


ENTITY™ UTILITY POUCH LARGE

STYLE: NTTPHL
OVERALL: 3.5 x 1.25 x 6.25 IN
8.9 x 3.2 x 15.9 CM

- Low profile subdued exterior
- Sized to fit the Apple iPhone 6, 6 Plus, 7, 7 Plus, 8, 8 Plus, and X
- Lightly padded interior
- High quality elastic bands for expansion
- Hook & loop flap fastener
- Laser cut TPU-840D nylon composite attachment backing
- One (1) TacTie® PJC3™ Polymer Joining Clip included for modular or belt attachment

ASH CHARCOAL



ENTITY™ UTILITY POUCH SMALL

STYLE: NTTPHS
OVERALL: 2.25 x 1.25 x 4.5 IN
5.7 x 3.2 x 11.4 CM

- Low profile subdued exterior
- Fits a multi-tool, 2 small flashlights, or 1 pistol mag
- Lightly padded interior
- High quality elastic bands for expansion
- Hook & loop flap fastener
- Laser cut TPU-840D nylon composite attachment backing
- One (1) TacTie® PJC3™ Polymer Joining Clip included for modular or belt attachment

ASH CHARCOAL



ENTITY™ HOOK & LOOP LOW PROFILE PANEL

STYLE: NTTPNFGY
OVERALL: 5 x 7 IN
12.7 x 17.8 CM

- Assorted pockets and elastic bands
- Gossamer™ mesh sleeve
- Reinforced with double stitching throughout
- Hook backing for secure attachment to a loop surface

GRAY

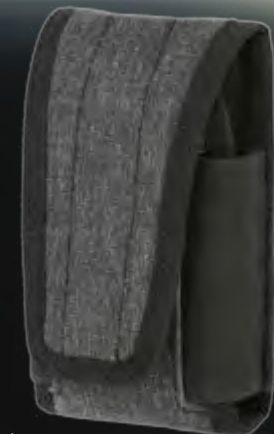


ENTITY™ UTILITY POUCH MEDIUM

STYLE: NTTPHM
OVERALL: 2.75 x 1.25 x 4.5 IN
7.0 x 3.2 x 11.4 CM

- Low profile subdued exterior
- Sized to fit the Apple iPhone 5/SE
- Fits a multi-tool with flashlight, a small camera, or 2 pistol mags
- Lightly padded interior
- High quality elastic bands for expansion
- Hook & loop flap fastener
- Laser cut TPU-840D nylon composite attachment backing
- One (1) TacTie® PJC3™ Polymer Joining Clip included for modular or belt attachment

ASH CHARCOAL

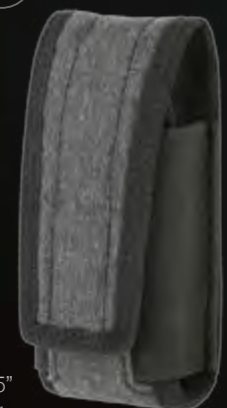


ENTITY™ UTILITY POUCH TALL

STYLE: NTTPHT
OVERALL: 2.25 x 1.25 x 5.25 IN
5.7 x 3.2 x 13.3 CM

- Low profile subdued exterior
- Fits a larger multi-tool, up to a 5.5" flashlight, or a large capacity mag
- Lightly padded interior
- High quality elastic bands for expansion
- Hook & loop flap fastener
- Laser cut TPU-840D nylon composite attachment backing
- One (1) TacTie® PJC3™ Polymer Joining Clip included for modular or belt attachment

ASH CHARCOAL



ENTITY™ HOOK & LOOP UTILITY PANEL

STYLE: NTTPNUGY
OVERALL: 5 x 7 x 1.25 IN
12.7 x 17.8 x 3.2 CM

- Dual pouches with flaps for securing contents
- Large gusseted slip pocket
- Perfect for handgun magazines, flashlights, and/or tools
- Reinforced with double stitching throughout
- Hook backing for secure attachment to a loop surface

GRAY





Maxpedition Riftblade backpack 30L

AGRTM *ADVANCED
GEAR RESEARCH*

Launched in 2016, the Advanced Gear Research (AGR) product line of bags and packs is the physical embodiment of Maxpedition's cutting edge research and development. Our continued commitment to uncompromised durability is combined with modernized aesthetics and a broadened palette of custom components, elevating Maxpedition gear to a new level of quality, innovation and sophistication.



TBR TIBURON™
BACKPACK 34L
COLORS: BLACK, GRAY, TAN



RBD RIFTBLADE™
CCW-ENABLED BACKPACK 30L
COLORS: BLACK, GRAY, TAN



RFC RIFTCORE™
CCW-ENABLED BACKPACK 23L
COLORS: BLACK, GRAY, TAN



LTH LITHVORE™
EVERYDAY BACKPACK 17L
COLORS: BLACK, GRAY, TAN



GRF GRIDFLUX™
ERGONOMIC SLING PACK 18L
COLORS: BLACK, GRAY, TAN



RPT RIFTPOINT™
CCW-ENABLED BACKPACK 15L
COLORS: BLACK, GRAY, TAN



EDP EDGEPEAK™
AMBIDEXTROUS SLING PACK 15L
COLORS: BLACK, GRAY, TAN



SKL SKYLANCETM
TECH GEAR BAG 28L
COLORS: BLACK, GRAY, TAN



SKY SKYVALETM
TECH MESSENGER BAG 16L
COLORS: BLACK, GRAY, TAN



SKR SKYRIDGE™
TECH MESSENGER BAG 12.5L
COLORS: BLACK, GRAY, TAN



STC SOLSTICE™
CCW CAMERA BAG 13.5L
COLORS: BLACK, GRAY, TAN



WLF WOLFSPUR™
CROSSBODY SHOULDER BAG 11L
COLORS: BLACK, GRAY, TAN



VLD VELDSPAR™
CROSSBODY SHOULDER BAG 8L
COLORS: BLACK, GRAY, TAN



LCR LOCHSPYR™
CROSSBODY SHOULDER BAG 5.5L
COLORS: BLACK, GRAY, TAN



VAL VALENCE™
TECH SLING PACK 10L
COLORS: BLACK, GRAY, TAN



MVL MINI VALENCE™
TECH SLING PACK 7L
COLORS: BLACK, GRAY, TAN



RSM IRONSTORM™
ADVENTURE TRAVEL BAG 62L
COLORS: BLACK, GRAY, TAN



RCD IRONCLOUD™
ADVENTURE TRAVEL BAG 48L
COLORS: BLACK, GRAY, TAN



RFY™
RAIN COVER
COLORS: BLACK, GRAY, TAN



LTB™
LIGHTWEIGHT TOILETRY BAG
COLORS: BLACK, GRAY, TAN



FTV™
FOLDING TRAVEL VALET
COLORS: BLACK, GRAY, TAN



PCS™/PCM™/PCL™
PACKING CUBE SMALL/MEDIUM/LARGE
COLOR: GRAY



FRP™
FIRST RESPONSE POUCH
COLORS: BLACK, GRAY, TAN



CAP™
COMPACT ADMIN POUCH
COLORS: BLACK, GRAY, TAN



AUP™
ACCORDION UTILITY POUCH
COLORS: BLACK, GRAY, TAN



DEPT™
DAILY ESSENTIALS POUCH
COLORS: BLACK, GRAY, TAN



ERZ™
EVERYDAY ORGANIZER
COLORS: BLACK, GRAY, TAN



MRZ™
MINI ORGANIZER
COLORS: BLACK, GRAY, TAN



IMP™
INDIVIDUAL MEDICAL POUCH
COLORS: BLACK, GRAY, TAN



SOP™
SIDE OPENING POUCH
COLORS: BLACK, GRAY, TAN



XBP™
EXPANDABLE BOTTLE POUCH
COLORS: BLACK, GRAY, TAN



RDP™
RADIO POUCH
COLORS: BLACK, GRAY, TAN



HLP™
HOOK & LOOP POUCH
COLORS: BLACK, GRAY, TAN



DES™
DOUBLE SHEATH POUCH
COLORS: BLACK, GRAY, TAN



SES™
SINGLE SHEATH POUCH
COLORS: BLACK, GRAY, TAN



MPP™
MEDIUM PADDED POUCH
COLORS: BLACK, GRAY, TAN



PUPT™
IPHONE UTILITY POUCH
COLORS: BLACK, GRAY, TAN



PLPT™
IPHONE 7 PLUS, 8 PLUS, X POUCH
COLORS: BLACK, GRAY, TAN



PHPT™
PHONE 7, 8 POUCH
COLORS: BLACK, GRAY, TAN



LPW™
LOW PROFILE WALLET
COLORS: BLACK, GRAY, TAN



BFW™
BI-FOLD WALLET
COLORS: BLACK, GRAY, TAN



TFW™
TRI-FOLD WALLET
COLORS: BLACK, GRAY, TAN



UPW™
UNIVERSAL PISTOL WRAP
COLOR: GRAY



DMW™
DUAL MAG WRAP
COLOR: GRAY



SDPT™
SHOULDER PAD
COLORS: BLACK, GRAY, TAN



TCP™
TRIANGLE COIN POUCH
COLORS: BLACK, GRAY, TAN



TACTIE® PJC5™
POLYMER JOINING CLIPS
COLORS: BLACK, GRAY, TAN



TACTIE® PJC3™
POLYMER JOINING CLIPS
COLORS: BLACK, GRAY, TAN



PZL™ POSITIVE GRIP
ZIPPER PULLS LARGE
COLORS: BLACK, GRAY, TAN



PZS™ POSITIVE GRIP
ZIPPER PULLS SMALL
COLORS: BLACK, GRAY, TAN



JUHL™
J UTILITY HOOK LARGE
COLORS: BLACK, GRAY, TAN



KEY FEATURES

BLK Black

GRY Gray

TAN Tan



Circular Reinforcement
Bartacks



Very Visible Grayscale Interior



ATtachment LAttice System -
ATLAS™, Laser cut from 840D
Nylon-TPU Composite



CCW Compartment with
Security Lockout Strip



Refined Construction with
Elegant Inlays



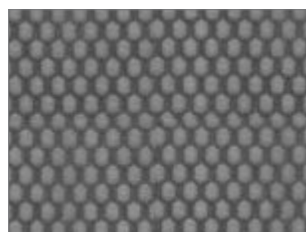
YKK® Zippers with Positive
Grip Zipper Pulls



840D Nylon-TPU Composite
Tapered Pull Loops



Custom Molded Fleece-
Lined Semi-Rigid Pocket



Fray-Resistant Gossamer
Mesh



Dual Nylon Fabric Construction
500D Hex Ripstop / 1000D



Expandable Bottle Holder
with Dual Zipper Garages



Drainage Port with
Laser Cut Apertures



Reinforced Yoke Backpack
Straps



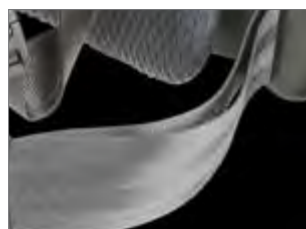
Adjustable Stabilizer Strap
and Sternum Strap



Exterior D-rings



Duraflex® Xlite® Anti-Break
Buckles



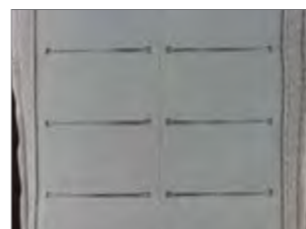
Skin Friendly Nylon Seatbelt
Webbing



Oversized Curvilinear CCW
Compartment Opening



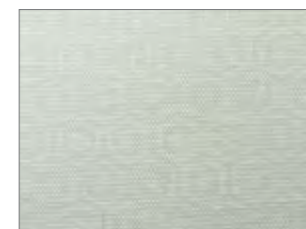
Heavy Duty Swivel Hook



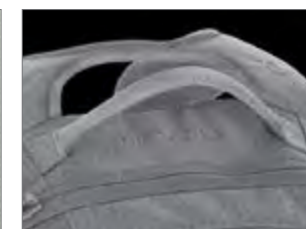
Laser Cut TPU-840D Nylon
Composite Attachment Backing



Bi-Level High Grade 3D Air
Mesh Backing



Anti-Counterfeit Logo
Embossed 420D Nylon Liner



Custom Fabricated
Shapeshift™ Webbing Handle



TacTie® Polymer Joining Clips
U.S. Patent: D796,846 S
Other U.S. & Int'l Pat. Pend.



RIFTBLADE™ CCW-ENABLED BACKPACK 30L

BLACK

GRAY

TAN

STYLE: RBD / OVERALL: 11 x 11 x 19 N | 27.9 x 27.9 x 48.3 CM

VOLUME: 1831 CU IN | 30 L

- Ergonomic backpack with quick release yoke-style straps
- Top shoulder strap compression load lifter
- Adjustable sternum strap
- Bottom adjustable compression straps
- Loop-lined middle compartment
- Removable and stowable padded waist belt with gear loops
- Forward cinching waist belt adjustment
- Quadruple side compression
- Dual hydration ports
- Hydration reservoir can double as a laptop sleeve (fits up to 15")
- Lockable main compartment
- Ample internal organization
- Front foam padded valuable compartment
- Two-way access to fully loop-lined rear CCW compartment with double-sided hook Security Lockout Strip included
- Laser cut ATLAS™ Attachment Lattice System



SUGGESTED ATTACHMENTS

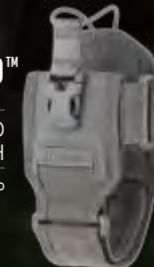
UPW™

UNIVERSAL
PISTOL WRAP
STYLE: UPW



RDP™

RADIO
POUCH
STYLE: RDP



IMP™

INDIVIDUAL
MEDICAL POUCH
STYLE: IMP





RIFTCORE™ CCW-ENABLED BACKPACK 23L

BLACK

GRAY

TAN

STYLE: RFC / OVERALL: 12 x 8 x 18 IN | 30.5 x 20.3 x 45.7 CM
VOLUME: 1400 CU IN | 23 L

- Ergonomic backpack with quick release yoke-style straps
- Adjustable sternum strap
- Strap-down area in loop-lined middle compartment
- Stowable padded waist belt with gear loops
- Forward cinching waist belt adjustment
- Quadruple side compression
- Dual hydration ports
- Hydration reservoir can double as a laptop sleeve (fits up to 13")
- Lockable main compartment
- Ample internal organization
- Custom molded fleece-lined semi-rigid EVA pocket
- Two-way access to fully loop-lined rear CCW compartment
- Double-sided Security Lockout Strip included
- Laser cut ATLAS™ Attachment Lattice System



SUGGESTED ATTACHMENTS

FRP™

FIRST RESPONSE
POUCH
STYLE: FRP



XBP™

EXPANDABLE
BOTTLE POUCH
STYLE: XBP



AUP™

ACCORDION
UTILITY POUCH
STYLE: AUP





RIFTPOINT™ CCW-ENABLED BACKPACK 15L

BLACK

GRAY

TAN

STYLE: RPT / OVERALL: 10 x 8 x 15.5 IN | 25.4 x 20.3 x 39.4 CM
VOLUME: 915 CU IN | 15 L

- Ergonomic backpack attachment points
- Adjustable sternum strap
- Main compartment rear sleeve fits 13" laptop
- Lockable main compartment
- Ample internal organization
- Small Front foam padded valuable compartment
- Two-way access to fully loop-lined rear CCW compartment with double-sided hook Security Lockout Strip included
- Laser cut ATLAS™ Attachment Lattice System
- Front lower compartment with assorted organizer interior pockets
- Bottom adjustable compression straps



SUGGESTED ATTACHMENTS

DMW™

DUAL
MAG WRAP
STYLE: DMW



SOP™

SIDE OPENING
POUCH
STYLE: SOP



HLP™

HOOK & LOOP
POUCH
STYLE: HLP



TIBURON™ BACKPACK 34L

BLACK GRAY TAN

STYLE: TBR / VOLUME: 2075 CU IN | 34 L

OVERALL: 17 x 12 x 20 IN | 43.2 x 30.5 x 50.8 CM

- Ergonomic backpack with quick release yoke-style straps
- Adjustable sternum strap
- Stowable padded waist belt with gear loops
- Forward cinching waist belt adjustment
- Side compression and dual hydration tube ports
- Top zippered slip pocket with a frontal 3.5" x 6" loop field for patch adhesion
- Front admin pocket for added organization
- Fully opening & lockable middle compartment
- Padded tech pocket sized to fit a 13" laptop and most tablets
- Lockable main compartment with sleeve for hydration reservoir
- Hidden bottom pocket to store a rain cover (sold separately)
- Laser cut ATLAS™ Attachment Lattice System



GRIDFLUX™ ERGONOMIC SLING PACK 18L

BLACK GRAY TAN

STYLE: GRF / VOLUME: 1100 CU IN | 18L

OVERALL: 12 x 9 x 18 IN | 30.5 x 22.9 x 45.7 CM

- Sling pack with reinforced padded shoulder strap
- Stowable swiveling stabilizer strap
- Grab handle to swing pack from back to front
- Dedicated padded tablet compartment
- Lockable main compartment
- Ample internal organization
- Custom molded fleece-lined semi-rigid EVA pocket
- Two locations for CCW placement
- Expandable water bottle pocket with dual zipper garages
- Laser cut ATLAS™ Attachment Lattice System



LITHVORE™ EVERYDAY BACKPACK 17L

BLACK GRAY TAN

STYLE: LTH / VOLUME: 1040 CU IN | 17 L

OVERALL: 16 x 9 x 17 IN | 40.6 x 22.9 x 43.2 CM

- Padded ergonomic shoulder straps
- Frontal compartment with organizer pockets
- Frontal 3.75" x 5.5" loop field for patch adhesion
- Two expandable bottle pockets with dual zipper garages
- Bottom shock cord retention array
- Full clamshell opening main compartment with
- Gossamer™ mesh pockets
- Shapeshift™ grab handle reinforced with bartacks
- Laser cut ATLAS™ Attachment Lattice System



EDGEPEAK™ AMBIDEXTROUS SLING PACK 15L

BLACK GRAY TAN

STYLE: EDP / VOLUME: 910 CU IN | 15L

OVERALL: 10 x 9 x 15 IN | 27.9 x 22.9 x 38.1 CM

- Fully ambidextrous sling pack
- Reinforced padded shoulder strap with swiveling stabilizer
- Lockable main compartment
- Dedicated padded tablet compartment
- Custom molded fleece-lined semi-rigid EVA pocket
- Two-way access to fully loop-lined rear CCW compartment
- Double-sided Security Lockout Strip included
- Laser cut ATLAS™ Attachment Lattice System



SOLSTICE™

CCW CAMERA BAG 13.5L

BLACK GRAY TAN

STYLE: STC / VOLUME: 824 CU IN | 13.5 L

OVERALL: 16.5 x 11.5 x 7.5 IN | 41.9 x 29.2 x 20.3 CM

- Zipper flaps offer additional water/rain protection
- Frontal 5" x 3.5" loop field for patch adhesion
- Single hand-operated magnetic closure
- Main compartment includes four (4) padded, flexible, and removable dividers
- Quick-release shoulder strap adjuster
- Padded shoulder strap with a curved removable shoulder pad
- Padded grab handle with seatbelt webbing
- Stowable adjustable waist belt doubles as a trolley strap
- Hook & loop waist belt strap organizer
- Lockable rear CCW compartment with a 10.5" zipper opening; also doubles as a device sleeve and can fit most standard sized tablets
- Molded nylon feet
- Laser cut ATLAS™ Attachment Lattice System



WOLFSPUR™

CROSSBODY SHOULDER BAG 11L

BLACK GRAY TAN

STYLE: WLF / VOLUME: 670 CU IN | 11 L

OVERALL: 11 x 7 x 13 IN | 27.9 x 17.8 x 33.0 CM

- Crossbody shoulder bag optimized for concealed carry
- Adjustable reinforced seatbelt webbing shoulder strap with quick release
- Excellent CCW access with a 15" zipper opening
- Fully loop-lined and lockable CCW compartment
- Oversized pull tab secured by double snaps
- Lockable main compartment sized to fit most tablets
- Custom molded fleece-lined semi-rigid EVA pocket
- Expandable water bottle pocket with dual zipper garages
- Stowable adjustable waist belt
- Curved shoulder pad included
- Comfortable grab handle reinforced with bartacks
- Laser cut ATLAS™ Attachment Lattice System



SKYLANCE™

TECH GEAR BAG 28L

BLACK GRAY TAN

STYLE: SKL / VOLUME: 1709 CU IN | 28 L

OVERALL: 16.5 x 9 x 13.5 IN | 41.9 x 22.9 x 34.3 CM

- Two (2) frontal 5" x 3.5" loop fields for patch adhesion
- Middle organizer compartment with magnetic closure
- Pivoting shoulder strap connections
- Dedicated 15" laptop compartment and tablet sleeve
- Main compartment drawbridge straps for additional security
- Main compartment has numerous pockets, sleeves & elastic loops for excellent organization
- Rear CCW compartment with a full clamshell zipper opening
- Skin-friendly seatbelt webbing
- Luggage handle trolley pass-through
- Curved shoulder pad included
- Padded grab handle with seatbelt webbing
- Laser cut ATLAS™ Attachment Lattice System



VELDSRAR™

CROSSBODY SHOULDER BAG 8L

BLACK GRAY TAN

STYLE: VLD / VOLUME: 490 CU IN | 8 L

OVERALL: 13 x 6 x 11.5 IN | 33.0 x 15.2 x 29.2 CM

- Rear lockable CCW compartment with a 16.5" zipper opening
- Adjustable reinforced seatbelt webbing shoulder strap with quick release
- Frontal admin compartment with elastic organizer
- Frontal 3" x 6" loop field for patch adhesion
- Expandable bottle pocket with dual zipper garages
- Zippered side pocket for extra storage
- Main compartment with large opening for high visibility
- Dedicated interior pocket sized to fit most tablets
- Stowable adjustable waist belt
- Curved shoulder pad included
- Comfortable grab handle reinforced with bartacks
- Laser cut ATLAS™ Attachment Lattice System



IRONSTORM™

ADVENTURE TRAVEL BAG 62L

BLACK GRAY TAN

STYLE: RSM / VOLUME: 3780 CU IN | 62 L

OVERALL: 15 x 11 x 26 IN | 38.1 x 27.9 x 66.0 CM

- Adventure travel bag with stowable yoke backpack straps
- Multiple handles for carrying & luggage maneuvering
- Removable single shoulder strap with overbuilt swivel hooks
- Dedicated padded 15" laptop compartment
- Dedicated padded tablet compartment
- Lockable padded main compartment
- Internal compression bib for securing contents
- Zip-up dividers in main compartment for improved organization
- Quick access slip pocket with zipper garage
- Pierced TPU-840D nylon composite drainage port
- Laser cut ATLAS™ Attachment Lattice System



IRONCLOUD™

ADVENTURE TRAVEL BAG 48L

BLACK GRAY TAN

STYLE: RCD / VOLUME: 2930 CU IN | 48L

OVERALL: 14 x 10 x 22 IN | 35.6 x 25.4 x 55.9 CM

- Airline carry-on size* adventure travel bag
- Stowable yoke backpack straps
- Multiple handles for carrying & luggage maneuvering
- Removable single shoulder strap with overbuilt swivel hooks
- Dedicated padded 15" laptop compartment
- Dedicated padded tablet compartment
- Lockable padded main compartment
- Internal compression bib for securing contents
- Quick access slip pocket with zipper garage
- Pierced TPU-840D nylon composite drainage port
- Laser cut ATLAS™ Attachment Lattice System



RFY™

RAIN COVER

BLACK GRAY TAN

STYLE: RFY

OVERALL: 14 x 10 x 22 IN | 36.5 x 25.4 x 55.9 CM



FTV™

FOLDING TRAVEL VALET

BLACK GRAY TAN

STYLE: FTV

FLAT OVERALL: 11 x 0.25 x 11.75 IN | 27.9 x 0.6 x 29.9 CM

FOLDED: 11 x 0.5 x 5.75 IN | 27.9 x 1.3 x 14.6 CM

TRAY: 7 x 2 x 6 IN | 17.8 x 5.1 x 15.2 CM



LTB™

LIGHTWEIGHT TOILETRY BAG

BLACK GRAY TAN

STYLE: LTB

OVERALL: 12 x 3.5 x 9 IN | 30.5 x 8.9 x 22.9 CM



PCS™ PCM™ PCL™

PACKING CUBE SMALL/MEDIUM/LARGE

GRAY

STYLE: PCS

OVERALL SIZE:

10.5 x 3 x 6.5 IN

26.7 x 7.6 x 16.5 CM

STYLE: PCM

OVERALL SIZE:

11.5 x 3.5 x 9 IN

29.2 x 8.9 x 22.9 CM

STYLE: PCL

OVERALL SIZE:

13.5 x 4 x 10 IN

34.3 x 10.2 x 25.4 CM



PLP™

IPHONE 7 PLUS, 8 PLUS, X POUCH

BLACK GRAY TAN

STYLE: PLP

OVERALL: 4 x 1 x 7.5 IN

| 10.2 x 2.5 x 19.1 CM



PHP™

IPHONE 7, 8 POUCH

BLACK GRAY TAN

STYLE: PHP

OVERALL: 3.75 x 1 x 7 IN

| 9.5 x 2.5 x 17.8 CM



ERZ™

EVERYDAY ORGANIZER

BLACK GRAY TAN

STYLE: ERZ

OVERALL: 6 x 2 x 8 IN

| 15.2 x 5.1 x 20.3 CM



MRZ™

MINI ORGANIZER

BLACK GRAY TAN

STYLE: MRZ

OVERALL: 5 x 2 x 7 IN

| 12.7 x 5.1 x 17.8 CM



▼ **LEGACY**[™] *SERIES*

The flagship Legacy[™] line was debuted by Maxpedition® Hard-Use Gear in 2003 and has been continually refined to the present day. It contains such iconic products as the Falcon[™] backpack, Jumbo[™] Versipack®, Sitka[™] Gearslinger® and Rollypoly® folding dump pouch. Celebrating its 15th anniversary in 2018, the Legacy line is trusted and preferred by tactical officers, military operators and adventure travelers around the world.



0514 VULTURE-II™ 3-DAY BACKPACK
COLORS: K, B, F



0512 CONDOR-II™ BACKPACK
COLOR: B



0529 TYPHOON™ BACKPACK
COLORS: B, KF



0316 H-1 WAISTPACK
COLORS: K, B



0307 M-1 WAISTPACK
COLOR: B



9811 MONKEY COMBAT™ ADMIN POUCH
COLORS: K, B



2301 BARNACLE™
COLOR: B



0329 INDIVIDUAL FIRST AID POUCH
COLORS: K, B



PT1054 GYRFALCON™ BACKPACK
COLORS: B, KF



PT1430 FALCON-III™ BACKPACK
COLORS: K, B, W



0513 FALCON-II™ BACKPACK
COLORS: K, B, F, KF, W



0517 PYGMY FALCON-II™ BACKPACK
COLORS: K, B, F, W



1432 SURGICAL GLOVES POUCH
COLOR: B



1813 TACTICAL CAN CASE
COLORS: K, B



0608 DOPPELDUFFEL™ ADVENTURE BAG
COLORS: K, B



0613 FLIEGERDUFFEL™ ADVENTURE BAG
COLORS: K, B



0615 CENTURION PATROL BAG
COLORS: K, B



0410 MONSOON™ GEARSLINGER®
COLORS: K, B



0432 KODIAK™ GEARSLINGER®
COLORS: K, B, KF, W



0431 SITKA™ GEARSLINGER®
COLORS: K, B, F, KF, W



0434 NOATAK™ GEARSLINGER®
COLOR: B



1308 8" X 10" PISTOL CASE / GUN RUG
COLOR: B



1309 8" X 12" PISTOL CASE / GUN RUG
COLOR: B



0621 COMPACT RANGE BAG
COLOR: K, B



0601 MPB™ MULTI-PURPOSE BAG
COLOR: B



0605 OPERATOR™ TACTICAL ATTACHE
COLOR: B



0423 MALAGA™ GEARSLINGER®
COLOR: B



0422 LUNADA™ GEARSLINGER®
COLOR: B



0419 REMORA™ GEARSLINGER®
COLORS: K, B



0455 OCTA™ VERSIPACK®
COLORS: K, B



0402 PROTEUS™ VERSIPACK®
COLORS: K, B



0226 FR-1™ MEDICAL POUCH
COLORS: K, B, G, F, W



PT1311 CHUBBY™ POCKET ORGANIZER
COLORS: B, F



0266 BEEFY™ POCKET ORGANIZER
COLORS: K, B, G, F, W



PT1312 SKINNY™ POCKET ORGANIZER
COLORS: K, B, F, W



0261 FATTY™ POCKET ORGANIZER
COLORS: K, B, G, F, W



0439 MONGO™ VERSIPACK®
COLORS: K, B



0412 JUMBO™ VERSIPACK®
COLORS: K, B, G, F, W



0403 FATBOY™ VERSIPACK®
COLORS: K, B, G



0401 THERMITE™ VERSIPACK®
COLORS: K, B



0211 NEATFREAK™ ORGANIZER
COLORS: K, B



0246 E.D.C. POCKET ORGANIZER
COLORS: K, B, G, F, W



0259 MINI POCKET ORGANIZER
COLORS: K, B, G, F, W



0262 MICRO POCKET ORGANIZER
COLORS: K, B, G



0325 10" X 4" BOTTLE HOLDER
COLORS: K, B, F



0323 12" X 5" BOTTLE HOLDER
COLORS: K, B, F



0207 MINI ROLLYPOLY® FOLDING DUMP POUCH
COLORS: K, B, G, F, KF, W



0208 ROLLYPOLY® MM FOLDING DUMP POUCH
COLORS: K, B, G, F, KF, W



0209 MEGA ROLLYPOLY® FOLDING DUMP POUCH
COLORS: K, B, G, W



1802 CUBOID™ - LARGE
COLOR: B



1803 CUBOID™ - MEDIUM
COLOR: B



1804 CUBOID™ - SMALL
COLOR: B



0809 MOIRE™ POUCH 8 X 6
COLOR: B



1412 DOUBLE SHEATH
COLOR: B



0102 CP-L LARGE PHONE/RADIO HOLSTER
COLORS: K, B, F



0110 5" CLIP-ON PHONE HOLSTER
COLORS: K, B, G, F



PT1022 VERTICAL SMART PHONE HOLSTER
COLORS: K, B



PT1021 HORIZONTAL SMART PHONE HOLSTER
COLORS: K, B



0229 SPARTAN™ WALLET
COLORS: K, B, G, F, BR



1411 SINGLE SHEATH
COLORS: K, B, F



1431 5" FLASHLIGHT SHEATH
COLOR: B



1430 4" FLASHLIGHT SHEATH
COLOR: B



1708 UFBS UNIVERSAL FLASHLIGHT/
BATON SHEATH COLOR: B



3501 UNIVERSAL CCW
HOLSTER COLOR: B



0253 C.M.C.™ WALLET
COLORS: K, B, G, F



0217 URBAN™ WALLET
COLOR: B



0218 MICRO™ WALLET
COLORS: K, B, G, F



8001 JANUS™ EXTENSION POCKET
COLORS: K, B, F, KF



3301 COCOON™ POUCH
COLORS: K, B, F



3535 SNEAK™ UNIVERSAL HOLSTER
INSERT WITH MAG RETENTION
COLORS: K, B, G, F



3503 DUAL MAG RETENTION
INSERT COLOR: B



3502 TRIPLE MAG HOLDER
COLOR: B



3525 HOOK & LOOP 5" X 7" ZIPPER
POCKET COLORS: KF



3526 HOOK & LOOP 3" X 5"
ZIPPER POCKET COLORS: KF



PT1190 COIN PURSE
COLORS: K, B



PT1155 COCOON™ E.D.C.
COLORS: K, B, W



1703 KEYPERT™
COLORS: K, B, G, F



1716 TRITIUM™ KEY RING
COLORS: K, B, G, F



CABLOC STEEL CABLE LOCK
COLORS: K, B, F



3507 HOOK & LOOP MINI
ORGANIZER COLORS: K, B



1810 TACTICAL TOILETRIES
BAG COLORS: B, KF



1817 AFTERMATH™ COMPACT
TOILETRIES BAG COLORS: K, B, F, KF



1805 TACTICAL TRAVEL TRAY
COLORS: K, B, F



1809 VOLTA™ BATTERY
POUCH COLORS: K, B



TSALOC TACTICAL LUGGAGE LOCK
COLORS: K, B, F



9407 1.5" SHOULDER PAD
COLORS: K, B, F



9408 2" SHOULDER PAD
COLORS: K, B, F



9501 1.5" SHOULDER STRAP
COLORS: K, B, F



9502 2" SHOULDER STRAP
COLORS: K, B, F



1713 TACTICAL T-RING
COLORS: K, B, G, F



9905 5" TACTIE® ATTACHMENT
STRAPS COLORS: K, B, G, F



9903 3" TACTIE® ATTACHMENT
STRAPS COLORS: K, B, G, F



NALG32DG 32 OZ. WIDE-MOUTH
NALGENE® BOTTLE



KEY FEATURES



Double Stitching



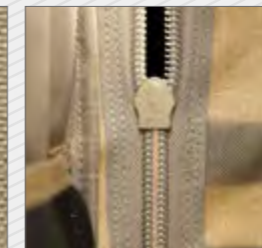
Box & X
Reinforced



Ergonomic
Designs



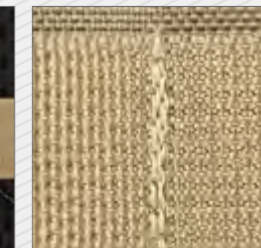
Teflon® Coated 1000
Denier Nylon Fabric



Genuine
YKK® Zippers



Genuine
Duraflex® Buckles



High Tensile Strength
Composite Thread



High Strength
Nylon Webbing



Paracord
Zipper Pulls



All Seams
Taped & Finished

LEGACY[™]
SERIES

COLOR GUIDE



Khaki
(K)



Black
(B)



Wolf Gray
(W)



Foliage Green
(F)



OD Green
(G)



Khaki Foliage
(KF)



Dark Brown
(BR)



GYRFALCON™ BACKPACK 36L

SKU #PT1054 / VOLUME: 2250 CU IN | 36L
OVERALL: 10.5 x 9.75 x 21.5 IN | 26.7 x 24.8 x 54.6 CM

- Removable, adjustable internal frame with sheet
- Wide load-bearing waist belt, with PALS attachments
- 5 compression straps, 2 webbing tie downs for lashing cargo
- Removable waistpack
- Included cargo strap, for attaching boxes, cans, cylinders, etc.
- Fully modular exterior for scalability

SUGGESTED ATTACHMENTS



FR-1™
MEDICAL POUCH
SKU #0226



12" X 5"
BOTTLE HOLDER
SKU #0323



CP-L LARGE PHONE /
RADIO HOLSTER
SKU #0102



FATTY™ POCKET
ORGANIZER
SKU #0261





FALCON-II™ CCW-ENABLED BACKPACK 23L

SKU #0513 / VOLUME: 1400 CU IN | 23 L
OVERALL: 9 x 10 x 18 IN | 22.9 x 25.4 x 45.7 CM

- CCW pocket that fits large pistols
- Classic Falcon™ accordion design, collapses when empty to a low profile



FALCON-III™ BACKPACK 35L

SKU #PT1430 / VOLUME: 2160 CU IN | 35L
OVERALL: 10 x 12 x 18 IN | 25.4 x 30.5 x 45.7 CM

- 3D breathable mesh padded back and shoulder straps
- CCW pocket, with lockable zippers, fits large pistols
- Classic Falcon™ accordion design, collapses when empty to a low profile



PYGMY FALCON-II™ BACKPACK 18L

SKU #0517 / VOLUME: 1100 CU IN | 18L
OVERALL: 9.5 x 8 x 17.5 IN | 24.1 x 20.3 x 44.5 CM

- 3D breathable mesh padded back and shoulder straps
- Main compartment has full clamshell opening





SITKA™ GEARSLINGER 15L

SKU #0431 / VOLUME: 940 CU IN | 15L
OVERALL: 10.5 x 7 x 18 IN | 26.7 x 17.8 x 45.7 CM

- Y-compression strap
- Anti-theft zipper capture system
- Additional retention strap
- End-buckle distress whistle
- CCW pocket, with lockable zippers, fits large pistols



LUNADA™ GEARSLINGER 9.8L

SKU #0422 / VOLUME: 600 CU IN | 9.8L
OVERALL: 8.5 x 5 x 12 IN | 21.6 x 12.7 x 30.5 CM

- Fits any standard tablet in a hard-shell case
- Quick release access for easy on and off
- Adjustable cross strap for stability
- Internal loop field for CCW
- Inner organization pocket
- YKK zipper closure
- Drainage grommet



JUMBO™ VERSIPACK

SKU #0412
OVERALL: 8 x 4 x 8.5 IN | 20.3 x 10.2 x 21.6 CM

- 5 interior/exterior sleeve & zipper pockets
- 1 cinch pocket fitted for 32 oz/1 L water bottle or radio
- Jumbo-sized utility buckles for quick access even when wearing gloves
- Exterior PALS attachment points and Keyper™



PROTEUS™ VERSIPACK

SKU #0402
OVERALL: 12 x 4.5 x 6.5 IN | 30.5 x 11.4 x 16.5 CM

- Carry it by hand or strap it around your waist
- Attaches to your Maxpedition bag using two (2) 5" TacTie® Attachment Straps





CENTURION™ PATROL BAG 42L

SKU #0615 / VOLUME: 2563 CU IN | 42L
OVERALL: 23 x 12 x 13 IN | 58.4 x 30.5 x 33 CM

- Modular attachment points
- Molded plastic feet for support and wear resistance
- Wrap-around dual handle design for superior strength
- Adjustable 2" shoulder strap with tri-fold shoulder pad included
- I.D. window



OPERATOR™ TACTICAL ATTACHE 24L

SKU #0605 / VOLUME: 1500 CU IN | 24L
OVERALL: 18 x 8 x 13 IN | 45.7 x 20.3 x 33 CM

- Padded main compartment
- Fits 15.4" laptop
- Quick access CCW compartment



FATTY™ POCKET ORGANIZER



SKU #0261
OVERALL: 5 x 2 x 7 IN | 12.7 x 5.1 x 17.8 CM



ROLLYPOLY® MM FOLDING DUMP POUCH



SKU #0208
FOLDED: 3.5 x 2 x 3 IN | 8.9 x 5.1 x 7.6 CM
UNFOLDED: 6 x 3 x 8 IN | 15.2 x 7.6 x 20.3 CM



FR-1™ MEDICAL POUCH



SKU #0226
OVERALL: 6 x 3 x 7 IN | 15.2 x 7.6 x 17.8 CM



MORALE PATCHES



FLAGS



PATRIOTIC



ID



MEDICAL



ACRONYMS



ANIMALS



HERITAGE



CULTURE



MICROPATCHES



NUMBERS LETTERS



HUMOR



SKULLS



ICONS



CCW
Enabled



Semi-Rigid
EVA Pocket



Fits
Tablet



Fits
Laptop



Carry-On
Sized



TacTie® PJC5™
Included



TacTie® PJC3™
Included



NTOA Member
Tested and
Recommended

DISCLAIMER

Maxpedition will not be held responsible for typographical errors, technical inaccuracies, or omissions. It is the responsibility of the customer to determine the suitability of Maxpedition products for use in his/her particular application, to follow all firearms safety rules, and to abide by all applicable laws.

INTELLECTUAL PROPERTY

Maxpedition stylized font and bootprint logos, Maxpedition word mark, Gearslinger, Versipack, Rollypoly and TacTie are federally and/or internationally registered trademarks of Edgygear Inc. Many products depicted in this catalog are protected by U.S. or international patents and/or patents pending.

CONTACT

Phone: 310.768.0098
Fax: 310.515.5950
General: Info@Maxpedition.com
Customer Service: CS@Maxpedition.com
Government: Gov@Maxpedition.com
Wholesale: Dealer@Maxpedition.com

CONNECT

[Maxpedition.com](https://www.Maxpedition.com)
www.Facebook.com/Maxpedition
www.Instagram.com/Maxpedition
www.Twitter.com/Maxpedition
www.Maxpedition.TV

Copyright © 2018 Edgygear Inc. All Rights Reserved.

VOLUME 27



Teflon® is a registered
trademark of The Chemours
Company FC, LLC, used
under license by Maxpedition



MAXPEDITION®



MAXPEDITION.COM